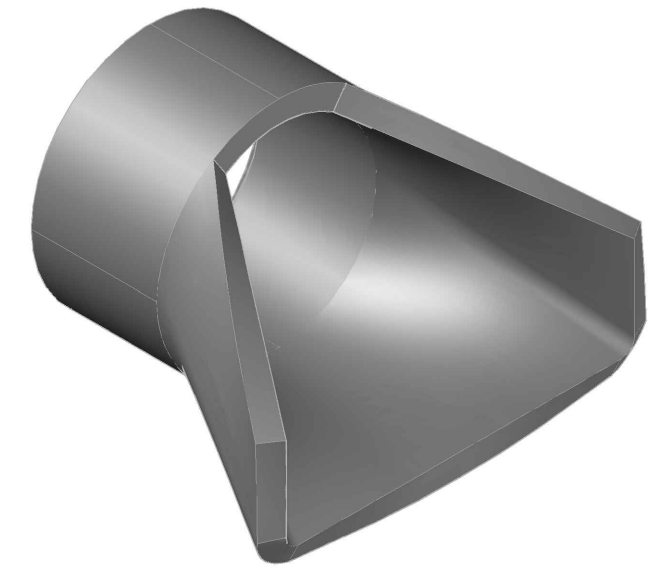
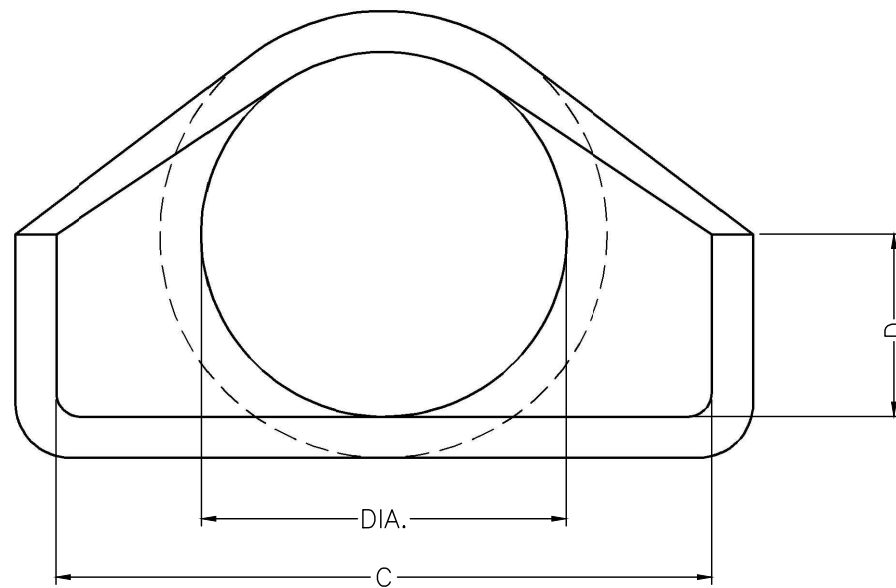


Dia. (mm)	Length (m)	Mass (kg)	Price Each (\$)	Actual Dimensions (mm)			
				A	B	C	D
450	1.25	320	812	572	724	914	229
600	1.85	725	1218	749	1168	1207	254
750	1.85	995	1625	508	1435	1524	305
900	2.45	2750	2640	864	1600	1829	381
1050	2.45	2886	3047	889	1650	1981	533
1200	2.45	2975	3453	610	1829	2134	610
1350	2.45	3665	4254	895	1651	2546	685
1500	2.45	4890	4623	819	1525	2740	762



ISOMETRIC VIEW



NOTES:

- 1) CEMENT : PORTLAND CEMENT TYPE 50(HS)
- 2) Max AGGREGATE SIZE: 20mm
- 3) 28 DAY STRENGTH: MIN. 35 MPa.
- 4) ENTRAINED AIR: 6%±1%
- 5) REINFORCING TO CAN/CSA-G30.18 400 MPa
- 6) ALL UNITS ARE IN MILLIMETERS UNLESS OTHERWISE NOTED.



DWG. NO.	REFERENCE	NO.:	REVISION DESCRIPTION	BY	APP'D	DATE	DRW BY	SWM	2018/02/20
-	-	-	-	-	-	-	CH'K BY	-	-
-	-	-	-	-	-	-	AP'D BY	-	-
-	-	-	-	-	-	-	AP'D BY	-	-
-	-	-	-	-	-	-	AP'D BY	-	-
-	-	-	-	-	-	-	SCALE: NTS	-	-

TITLE:	FLARED END DETAIL DRAWING	
PROJECT NO.:	JOB NO.:	
DRAWING NO.:	SVI-FE-1000-01A	

