


A ID	B OD	C THK.	D HEIGHT	E JOINT HT.	F BASE	G SPACING
2108	2514	203	610	152	254	305
2108	2514	203	914	152	254	305
2108	2514	203	1219	152	254	305
2108	2514	203	1524	152	254	305
2108	2514	203	1829	152	254	305

AVAILABLE HEIGHTS	QTY. OF RUNGS	STARCON LIFTING PINS	WEIGHTS [kg]
0.61m [2']	1	8T	5450
0.91m [3']	2	8T	6800
1.22m [4']	3	8T	7950
1.52m [5']	4	8T	9070
1.83m [6']	5	8T	10200

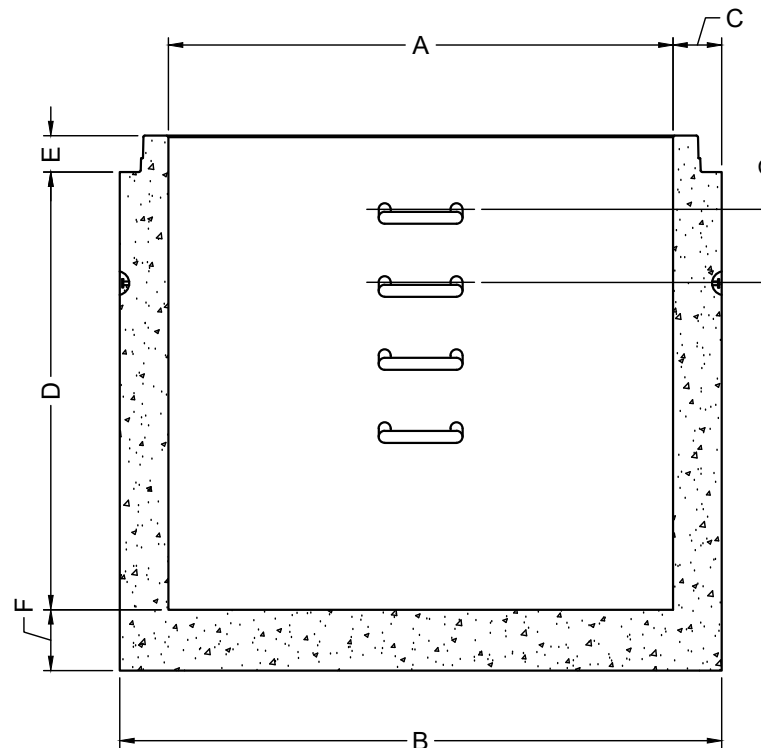
RELEASE	MPa	20
28 DAY:	MPa	35
AIR CONTENT:		6% ± 1%
WEIGHT:	kg	VOLUME m <sup>3</sup>
TYPE:		kg/m <sup>3</sup> 2402

STRAND		mm	-
		MPa	-

MARK	DESCRIPTION	QTY.



ISOMETRIC VIEW  
NTS



ELEVATION  
VIEW



NOTES:

- 1) CEMENT : PORTLAND CEMENT TYPE 50(HS)
- 2) Max AGGREGATE SIZE: 20mm
- 3) 28 DAY STRENGTH: MIN. 35 MPa.
- 4) ENTRAINED AIR: 6%±1%
- 5) REINFORCING TO CAN/CSA-G30.18 400 MPa
- 6) ALL UNITS ARE IN MILLIMETERS UNLESS OTHERWISE NOTED.

DWG. NO.	REFERENCE	NO.:	REVISION DESCRIPTION	BY	APP'D	DATE	DRW BY	SWM	2018/11/21
-	-	A	ISSUED PLAN	-	-	2018/11/21	CH'K BY	-	-
-	-	-	-	-	-	-	AP'D BY	-	-
-	-	-	-	-	-	-	AP'D BY	-	-
-	-	-	-	-	-	-	AP'D BY	-	-
-	-	-	-	-	-	-	SCALE: NTS	PAGE: 1 OF 1	

TITLE:	2100 MONOBASE DETAIL DRAWING	
PROJECT NO.:	JOB NO.:	
DRAWING NO.:	SVI-MB-2100-01A	