

A ID	B OD	C THK.	D HEIGHT	E BASE
610	762	76	610	152
610	762	76	914	152
610	762	76	1067	152
610	762	76	1219	152

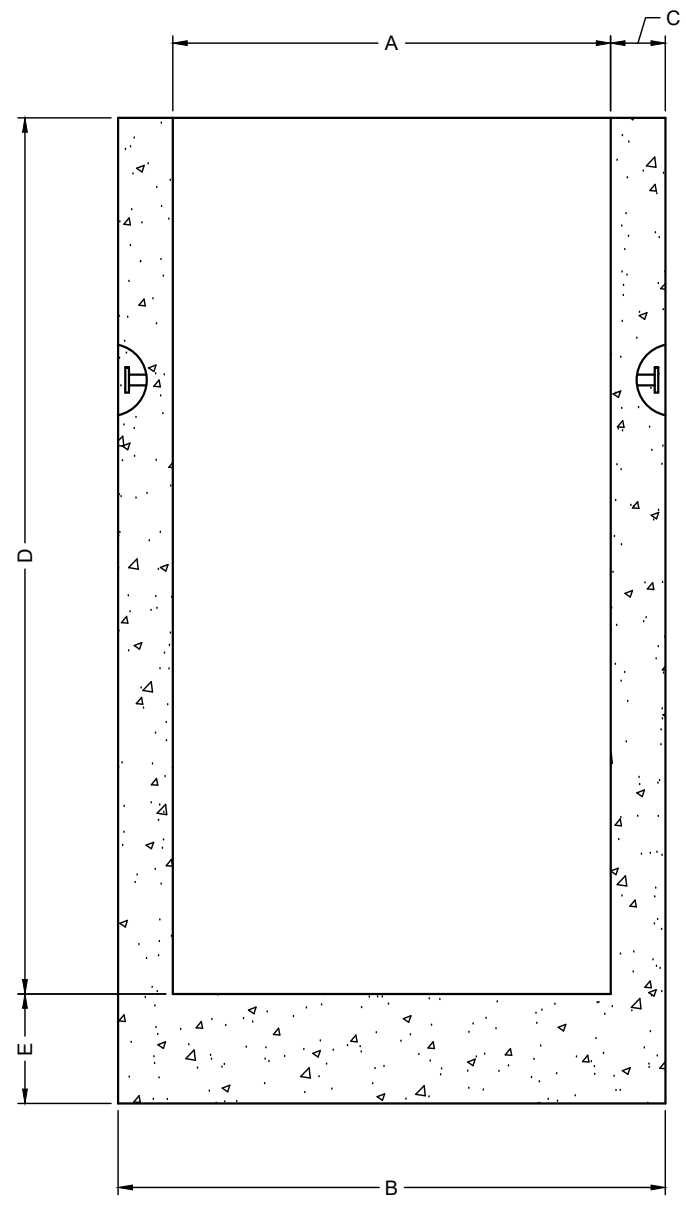
AVAILABLE HEIGHTS	QTY. OF RUNGS	STARCON LIFTING PINS	WEIGHTS [kg]
0.61m [2']	0	4T	390
0.91m [3']	0	4T	505
1.07m [3.5']	0	4T	590
1.22m [4']	0	4T	621

CONCRETE		RELEASE	MPa	20
		28 DAY:	MPa	35
		AIR CONTENT:		6% ± 1%
WEIGHT:	kg	VOLUME	m ³	
TYPE:			kg/m ³	2402
STRAND			mm	-
			MPa	-

MARK	DESCRIPTION	QTY.



ISOMETRIC VIEW
NTS



ELEVATION VIEW

- NOTES:
- 1) CEMENT : PORTLAND CEMENT TYPE 50(HS)
 - 2) Max AGGREGATE SIZE: 20mm
 - 3) 28 DAY STRENGTH: MIN. 35 MPa.
 - 4) ENTRAINED AIR: 6%±1%
 - 5) REINFORCING TO CAN/CSA-G30.18 400 MPa
 - 6) ALL UNITS ARE IN MILLIMETERS UNLESS OTHERWISE NOTED.

DWG. NO.	REFERENCE	NO.:	REVISION DESCRIPTION	BY	APP'D	DATE	DRW BY	SWM	2018/11/20
-	-	A	ISSUED PLAN	-	-	2018/11/20	CH'K BY	-	-
-	-	-	-	-	-	-	AP'D BY	-	-
-	-	-	-	-	-	-	AP'D BY	-	-
-	-	-	-	-	-	-	AP'D BY	-	-
-	-	-	-	-	-	-	SCALE: NTS	PAGE: 1 OF 1	

TITLE:		600 MONOBASE DETAIL DRAWING	
PROJECT NO.:	JOB NO.:		
DRAWING NO.:	SVI-MB-600-01A		