

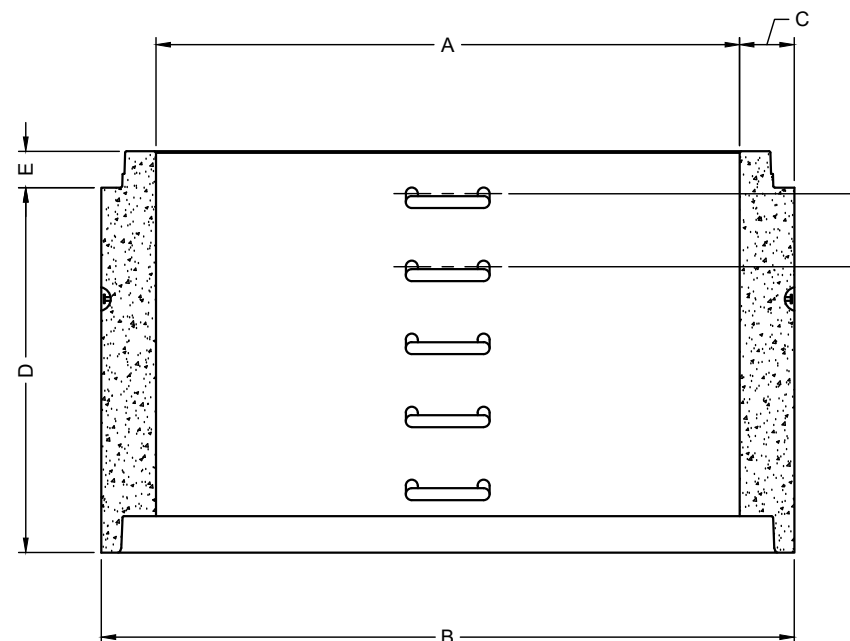
A ID	B OD	C THK.	D HEIGHT	E JOINT HT.	F SPACING
2438	2895	229	305	152	305
2438	2895	229	457	152	305
2438	2895	229	610	152	305
2438	2895	229	914	152	305
2438	2895	229	1219	152	305
2438	2895	229	1524	152	305
2438	2895	229	1828	152	305

AVAILABLE HEIGHTS	QTY. OF RUNGS	STARCON LIFTING PINS	WEIGHTS [kg]
0.31m [1']	1	8T	1316
0.46m [1.5']	2	8T	1986
0.61m [2']	2	8T	2658
0.91m [3']	3	8T	4001
1.22m [4']	4	8T	5343
1.52m [5']	5	8T	6686
1.83m [6']	6	8T	8023

CONCRETE	RELEASE	MPa	20
	28 DAY:	MPa	35
	AIR CONTENT:	6% ± 1%	
	WEIGHT:	kg	VOLUME
STRAND	TYPE:	kg/m <sup>3</sup> 2402	
		mm	
		MPa	
MARK	DESCRIPTION		QTY.



ISOMETRIC VIEW  
NTS



ELEVATION  
VIEW



- NOTES:
- 1) CEMENT : PORTLAND CEMENT TYPE 50(HS)
  - 2) Max AGGREGATE SIZE: 20mm
  - 3) 28 DAY STRENGTH: MIN. 35 MPa.
  - 4) ENTRAINED AIR: 6%±1%
  - 5) REINFORCING TO CAN/CSA-G30.18 400 MPa
  - 6) ALL UNITS ARE IN MILLIMETERS UNLESS OTHERWISE NOTED.

DWG. NO.	REFERENCE	NO.:	REVISION DESCRIPTION	BY	APP'D	DATE	DRW BY	SWM	2018/11/21
-	-	A	ISSUED PLAN	-	-	2018/11/21	CH'K BY	-	-
-	-	-	-	-	-	-	AP'D BY	-	-
-	-	-	-	-	-	-	AP'D BY	-	-
-	-	-	-	-	-	-	AP'D BY	-	-
-	-	-	-	-	-	-	SCALE: NTS	PAGE: 1 OF 1	

TITLE:		2400 RISER DETAIL DRAWING	
PROJECT NO.:	JOB NO.:		
DRAWING NO.:	SVI-MR-2400-01A		