

A ID	B OD	C THK.	D HEIGHT	E JOINT HT.	F SPACING
3048	3067	279	305	152	305
3048	3067	279	457	152	305
3048	3067	279	610	152	305
3048	3067	279	914	152	305
3048	3067	279	1219	152	305

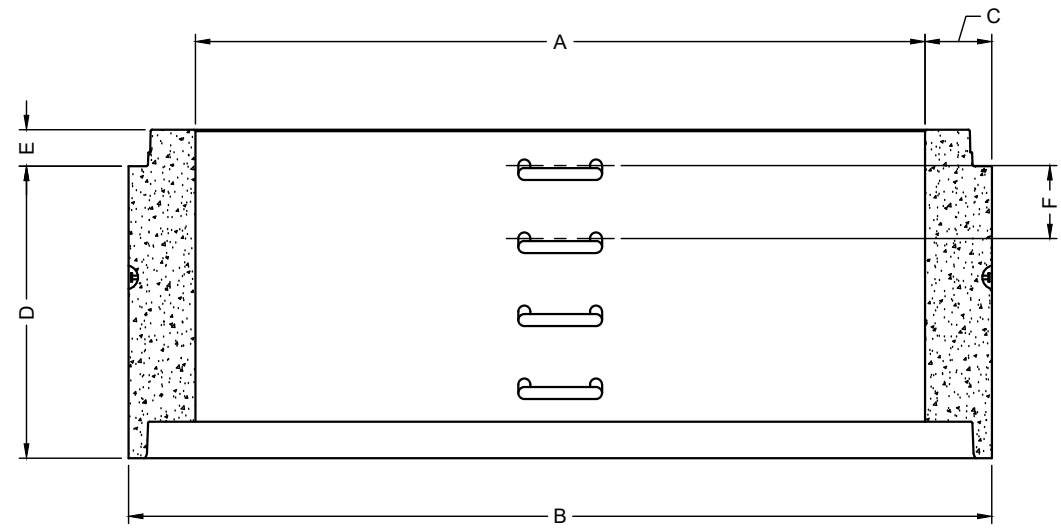
AVAILABLE HEIGHTS	QTY. OF RUNGS	STARCON LIFTING PINS	WEIGHTS [kg]
0.31m [1']	1	8T	2013
0.46m [1.5']	2	8T	3035
0.61m [2']	2	8T	4060
0.91m [3']	3	8T	6108
1.22m [4']	4	8T	8160

RELEASE	MPa	20
28 DAY:	MPa	35
AIR CONTENT:		6% ± 1%
WEIGHT:	kg	VOLUME m <sup>3</sup>
TYPE:		kg/m <sup>3</sup> 2402
		mm
		MPa

MARK	DESCRIPTION	QTY.



ISOMETRIC VIEW  
NTS



ELEVATION  
VIEW

- NOTES:
- 1) CEMENT : PORTLAND CEMENT TYPE 50(HS)
  - 2) Max AGGREGATE SIZE: 20mm
  - 3) 28 DAY STRENGTH: MIN. 35 MPa.
  - 4) ENTRAINED AIR: 6%±1%
  - 5) REINFORCING TO CAN/CSA-G30.18 400 MPa
  - 6) ALL UNITS ARE IN MILLIMETERS UNLESS OTHERWISE NOTED.

DWG. NO.	REFERENCE	NO.:	REVISION DESCRIPTION	BY	APP'D	DATE	DRW BY	SWM	2018/11/21
-	-	A	ISSUED PLAN	-	-	2018/11/21	CH'K BY	-	-
-	-	-	-	-	-	-	AP'D BY	-	-
-	-	-	-	-	-	-	AP'D BY	-	-
-	-	-	-	-	-	-	AP'D BY	-	-
-	-	-	-	-	-	-	SCALE: NTS	PAGE: 1 OF 1	

TITLE:		3000 RISER DETAIL DRAWING	
PROJECT NO.:	JOB NO.:		
DRAWING NO.:	SVI-MR-3000-01A		